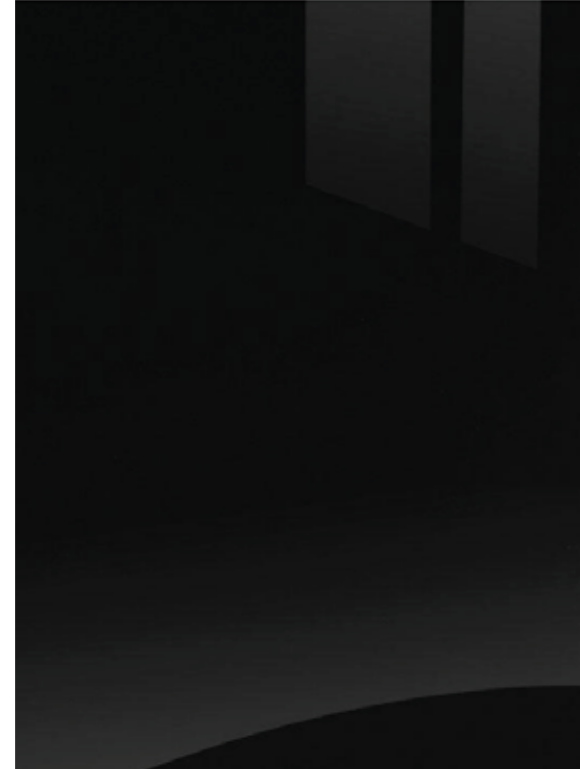


TRUE TO FORM TRUE TO FOOD - THE TECHNICURIAN LIFESTYLE



Matte Black Cabinetry



Backsplash



Porcelain Countertops



Sofa Fabric



Hardware



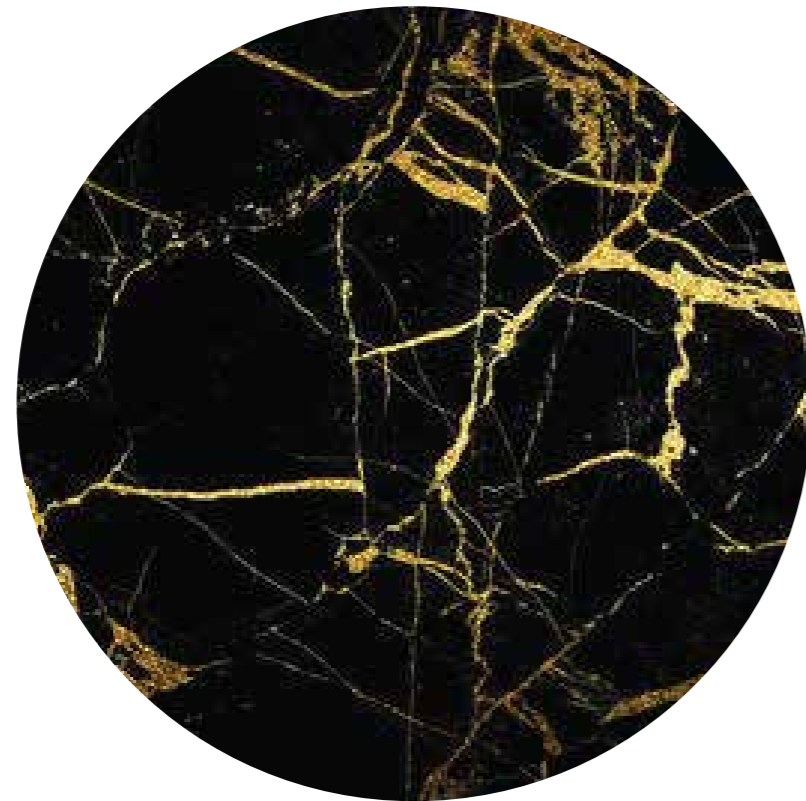
Kitchen Faucets



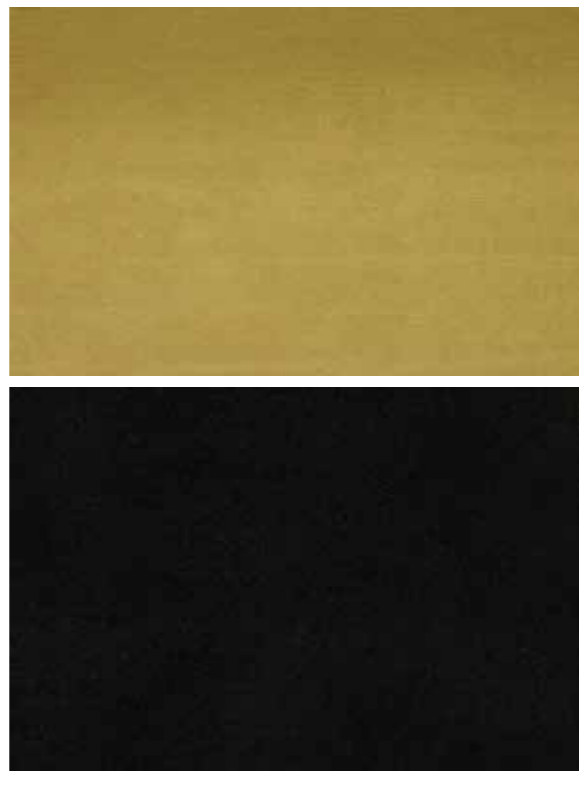
Ceiling Pendants



Flooring



Kitchen Islands

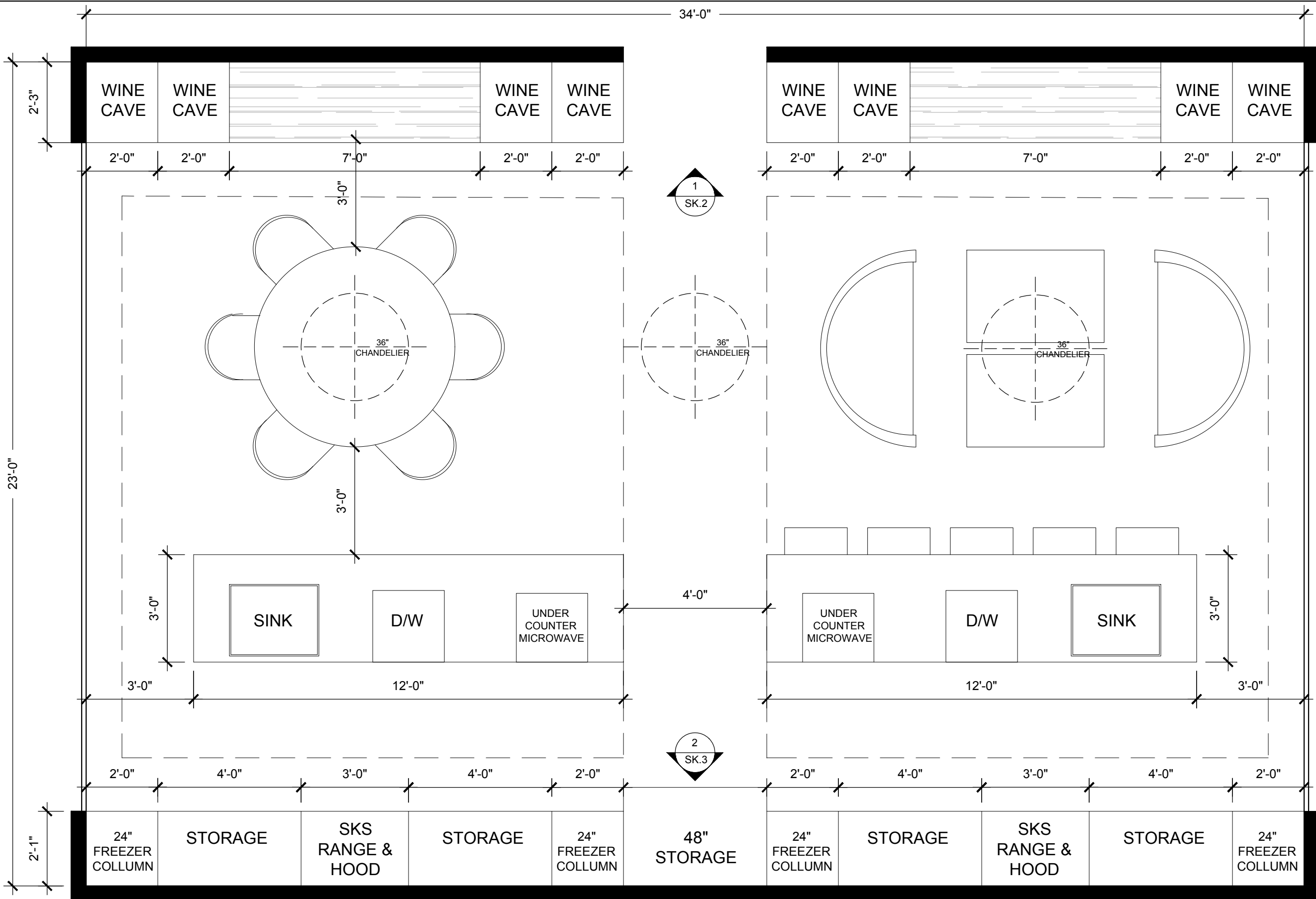


Accent Pillows



Sofa

Dining Chairs



NOTES

Working Title
TX2
Technicureans times Two

Description
"Experiential Cooking Combined with Stylish Dining and Luxury Living Space".

For the couple that likes to cook together creating True to Food Meals for their family and friends in an all inclusive environment.

The Structure
Typical of a raw undivided ruinous relect structures, of antique loft space with high ceilings, wide open space, with original ceiling to floor iron grid glass walls, sawn oak floors, in old multi story brick buildings. These buildings were once dedicated to manufacturing in the NY NJ tri state area, now being converted into experiential amenity driven custom living spaces and buildings for epicurious Millennials and their families. The custom kitchen areas are designed with the involvement of the owner as construction takes place. Located in or close to the city resources, to obtain fresh products, field to table via farm markets, specialty stores and on demand delivered gourmet items is a single cooking, living and entertaining space created for the Technicurean Lifestyle T X 2.

The SKS line up used in this kitchen:

- 2- 24 refrigeration columns
- 2- 24 freezer columns
- 8- 24 wine columns
- 2- 36 Sous Vide Duel Fuel Ranges
- 2-24 under counter microwaves
- 2- Dishwashers

Anticipated Overall Finishes
A Truth To Materials approach.

SKS stainless steel appliances
Biophilic tones
Textured Matte finishes
Matte metals, of black, burnished bronze, and steel
Concrete
Raw oak
Porcelain
Statement stone

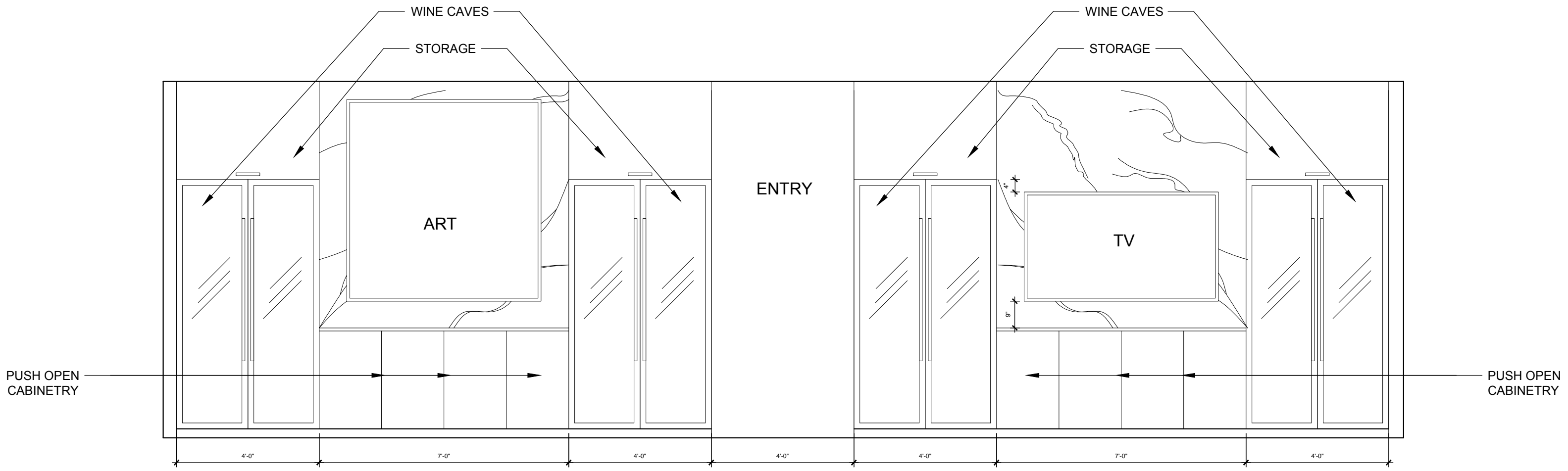
SUBMITTED BY: JOAN RAVASY

DRAWING NAME: FLOOR PLAN - REVISION 1

SCALE: 1/4" = 1' - 0"

ISSUE DATE: 12-18-2019

SK.1



SK.3 FRONT WALL ELEVATION
 3/8" = 1' - 0"

SUBMITTED BY: JOAN RAVASY

DRAWING NAME: FRONT WALL ELEVATION

SCALE: 3/8" = 1' - 0"
 ISSUE DATE: 12-10-2019

SK.3

DESIGNER SHOWCASE



Technicureans Times Two

Design by *Joan Ravasy* | *Joan Ravasy Design, LLC*

"Experiential cooking meets stylish dining and a luxury living space," says Joan Ravasy, describing her showcase. Together with team member, Isabel Byrnes, she designed this space with specific form and line as the perfect kitchen for the Technicurean couple that likes to prepare food and entertain for their family and friends in an all-inclusive, luxury curated environment. The wide open area is typical of raw undivided ruinous relic structures, of antique loft space with high ceilings and original full exposure iron grid glass walls, cross sawn oak floors, in old multi-story brick buildings. Once dedicated to then prevalent manufacturing industry in the New York/New Jersey tri-state area, these structures are now being repurposed into experiential amenity-driven custom living spaces and buildings for epicurious millennial families. Located in outlying areas with abundant local resources to obtain field-to-table produce, fresh cut meats, specialty stores and on-demand delivered gourmet items, Joan Ravasy Design created this single open, bespoke and elegantly austere space, contrasting restored backgrounds with new technology and finishes, designed for the Technicurean Lifestyle times two.

See more of Joan's designs at joanravasydesign.com.



PRODUCTS SHOWN

24-INCH REFRIGERATOR COLUMNS, 24-INCH FREEZER COLUMNS, 24-INCH WINE COLUMNS, 36-INCH DUAL-FUEL PRO RANGE WITH SOUS VIDE, 36-INCH PRO-STYLE WALL HOODS

Please go to signaturekitchensuite.com for the latest information on our new products.